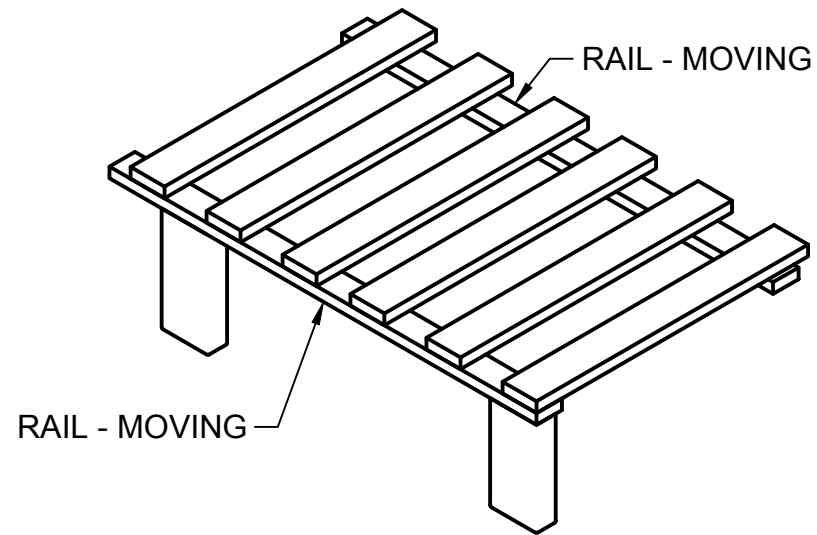
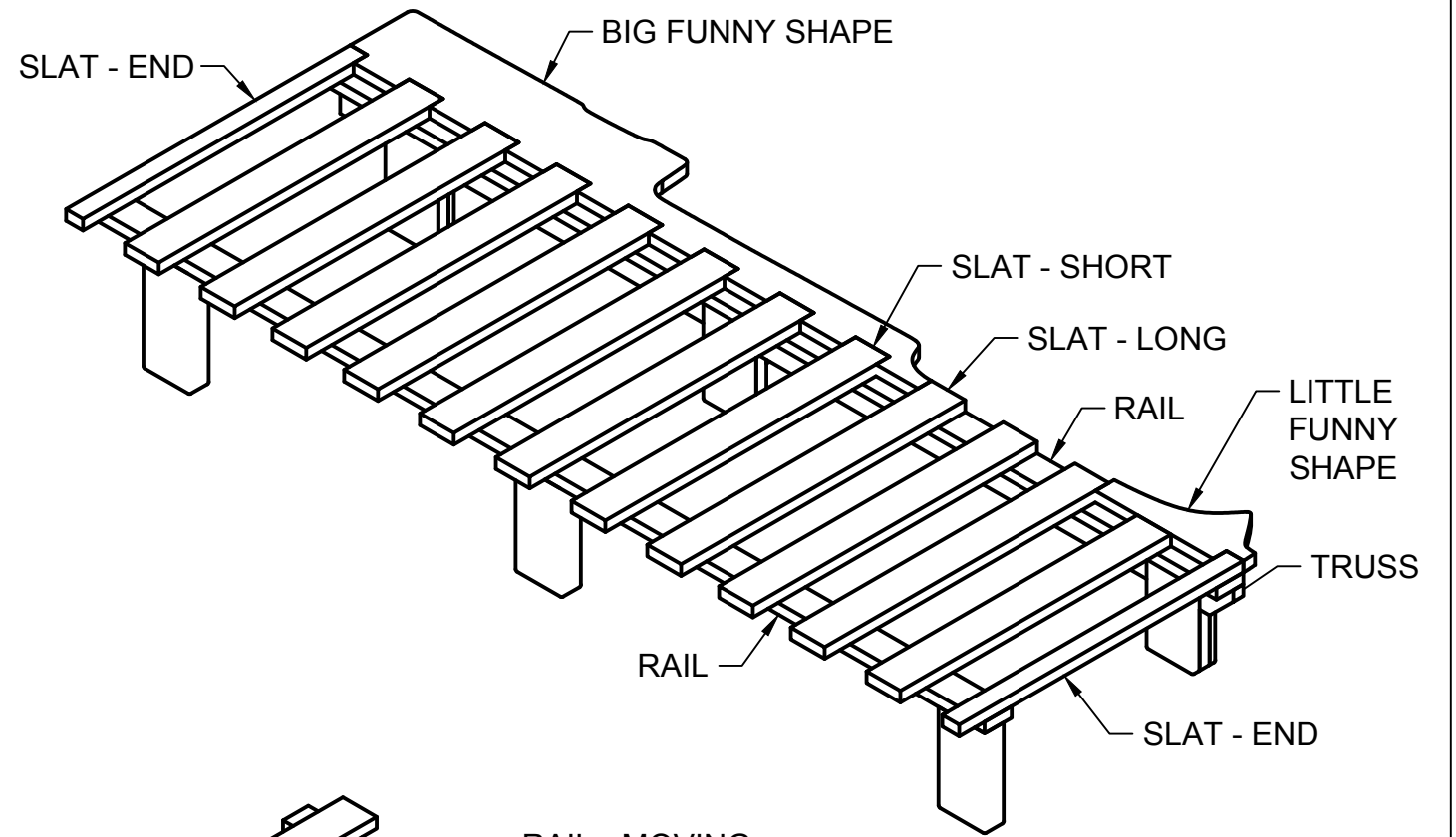
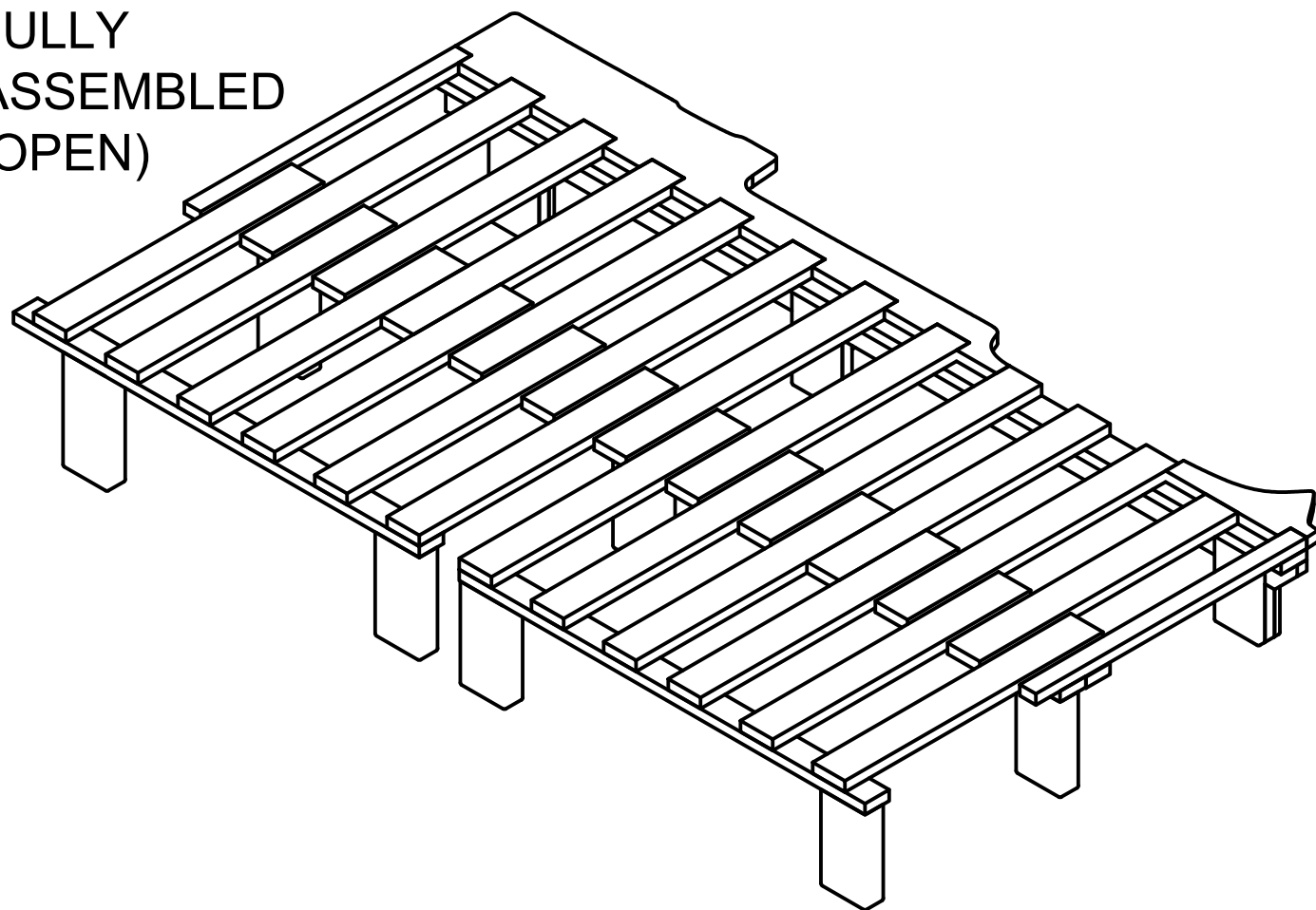


FULLY  
ASSEMBLED  
(CLOSED)



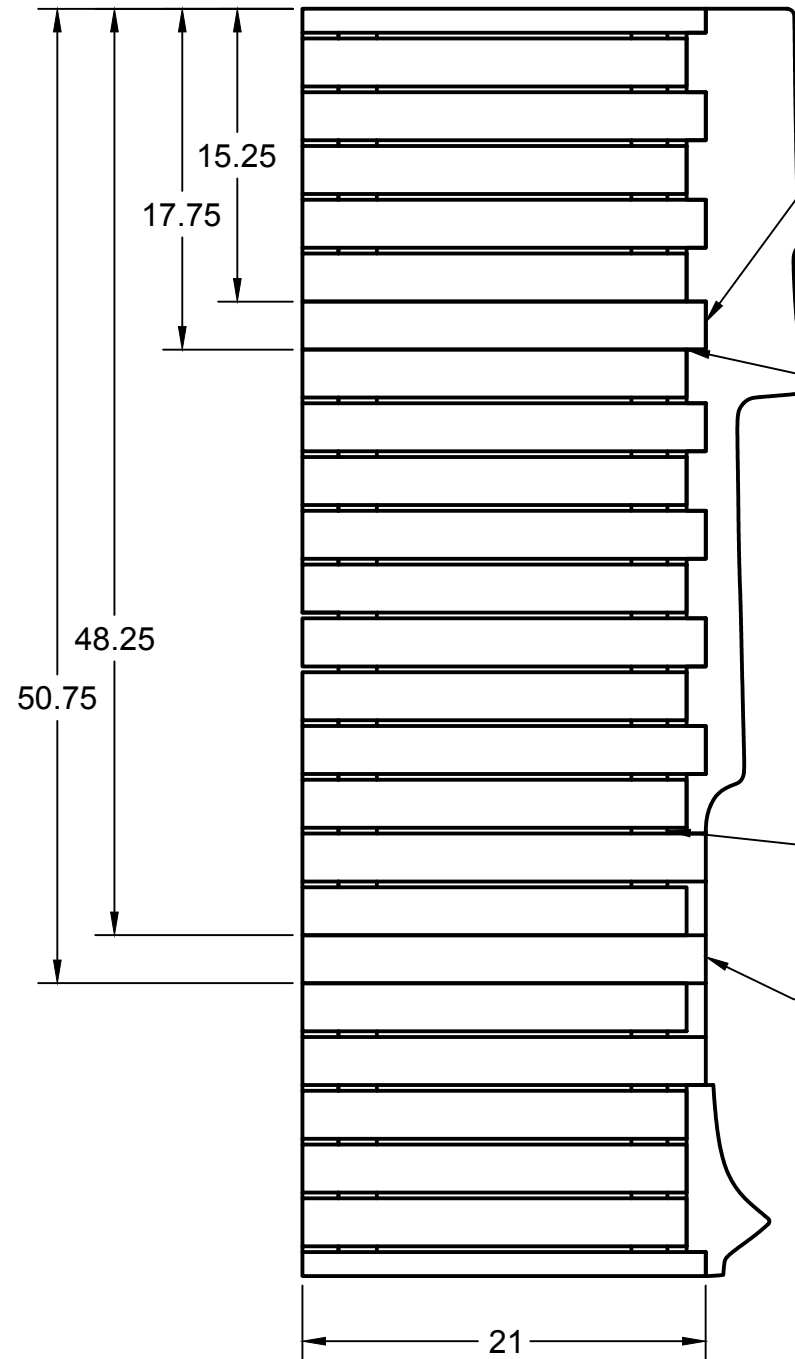
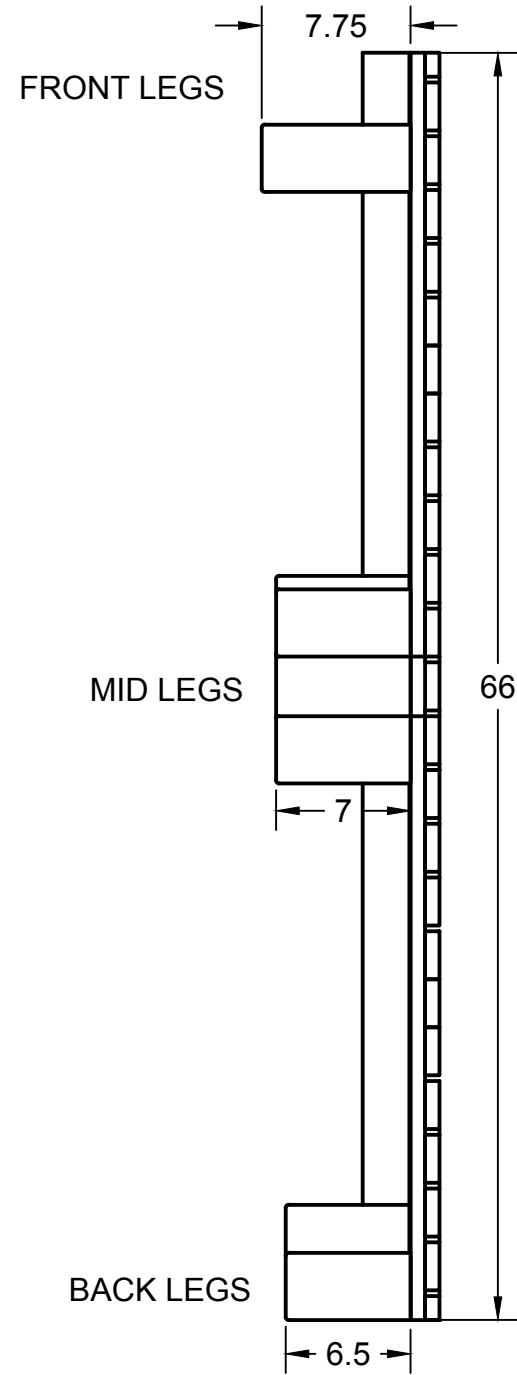
FULLY  
ASSEMBLED  
(OPEN)



		PROJECT		
		Amy Makes Stuff		
		TITLE		
		Honda Element Bed		
APPROVED	SIZE	CODE	DWG NO	REV
CHECKED	B			
DRAWN	Amy Qian	9/11/19	SCALE 1:20	WEIGHT
			SHEET 1/5	

### FULLY ASSEMBLED (CLOSED)

### FULLY ASSEMBLED (OPEN)

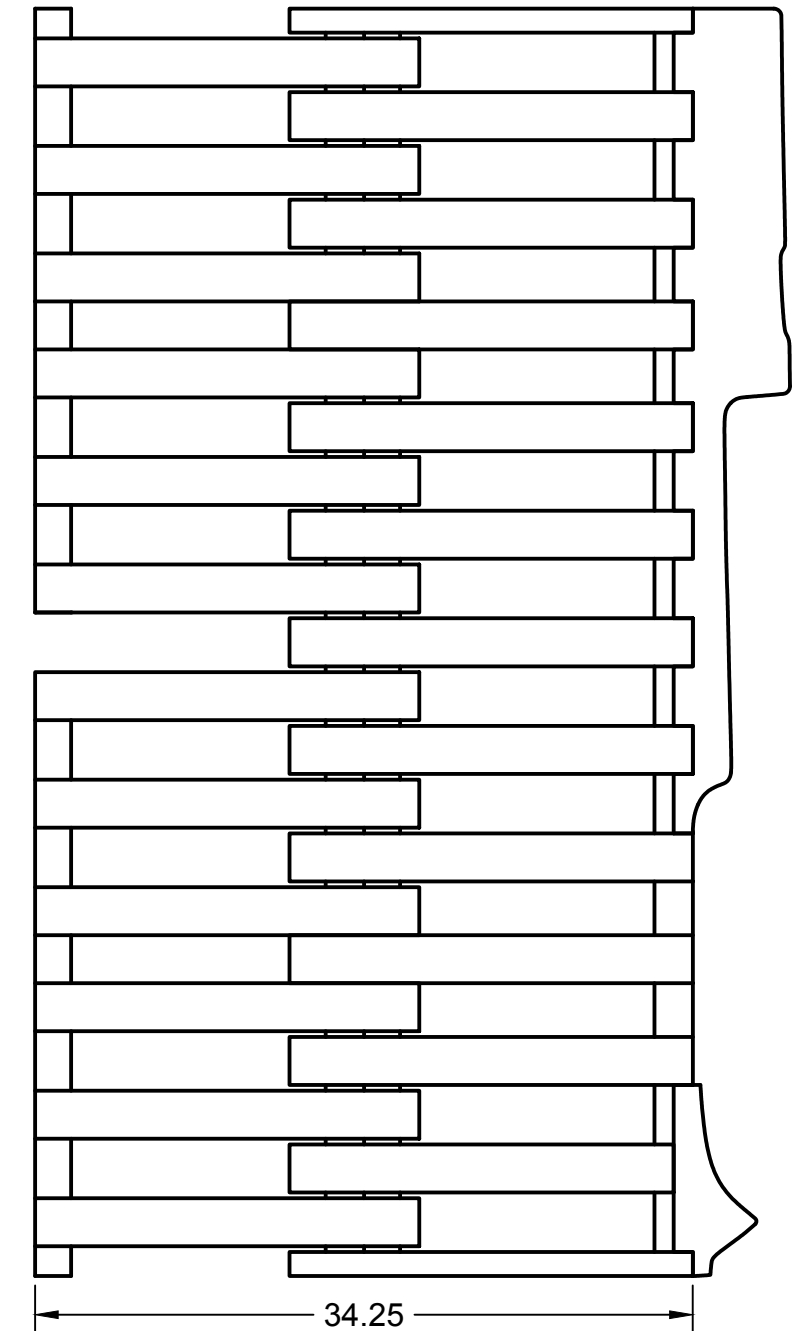


A SINGLE SLAT ATTACHED TO THE FIXED FRAME SERVES AS THE SLIDE GUIDE FOR EACH PULL-OUT SECTION

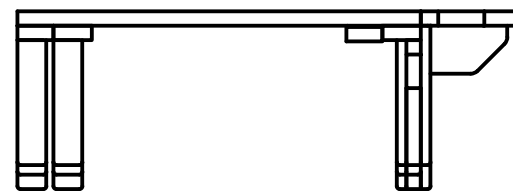
TIGHT GAP

THE OTHER SLATS HAVE 0.3 IN GAP TO DECREASE FRICTION AND BINDING

SLIDE GUIDE



LEGS ARE DIFFERENT LENGTHS BECAUSE THE FLOOR OF THE HONDA ELEMENT IS SLOPED.



LEGS ON THE LEFT AND MOVING LEGS ARE SIMPLE 2X4's

LEGS ON THE RIGHT ARE MADE OF LAYERS TO ACCOMODATE THE TRUSS

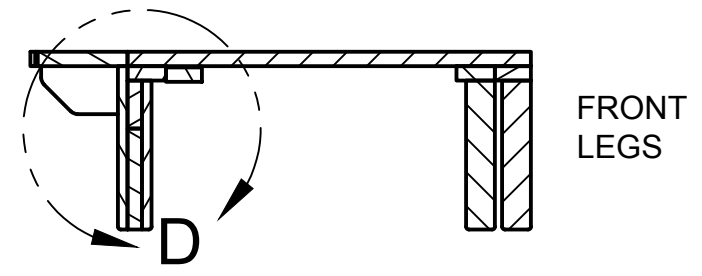
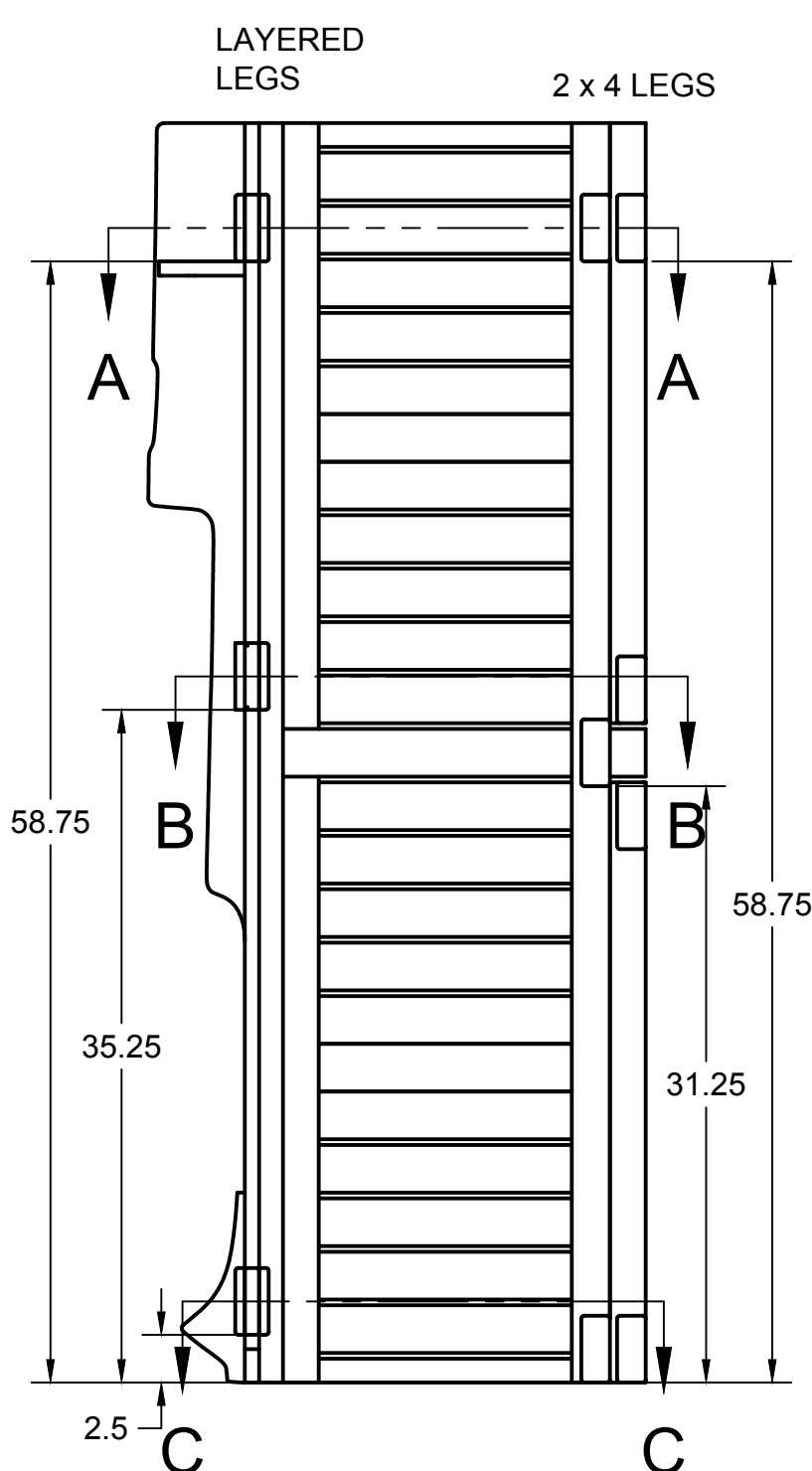
PROJECT

**Amy Makes Stuff**

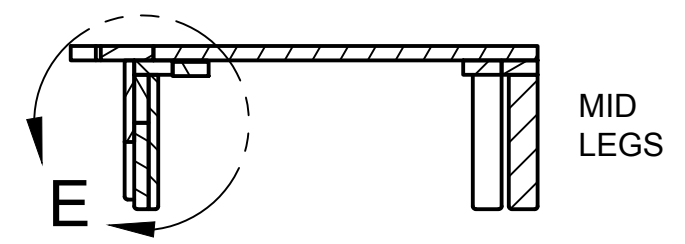
TITLE

**Honda Element Bed**

APPROVED	SIZE	CODE	DWG NO	REV
CHECKED	B			
DRAWN Amy Qian 9/11/19	SCALE 1:20	WEIGHT	SHEET 2/5	



SECTION A-A

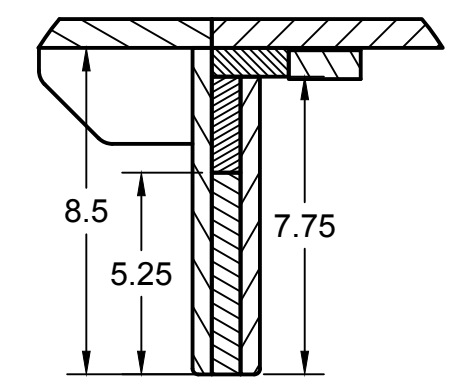


SECTION B-B

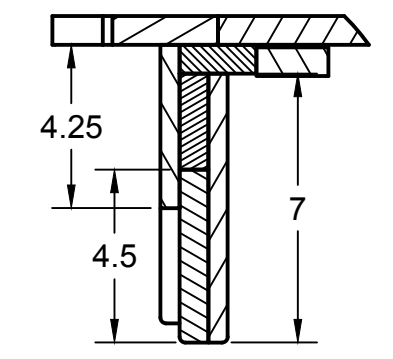


SECTION C-C

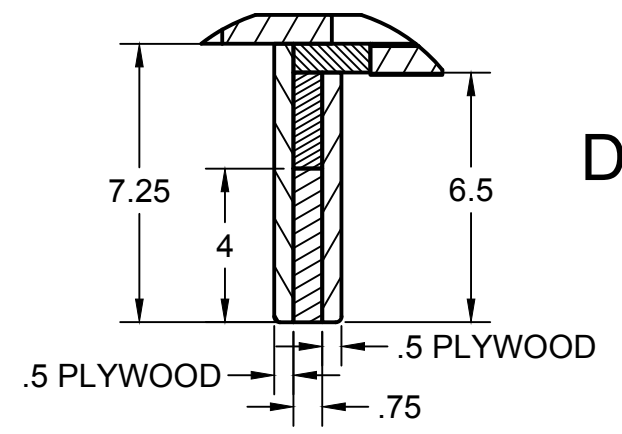
DETAILED DIMENSIONS OF LAYERED LEGS



DETAIL D

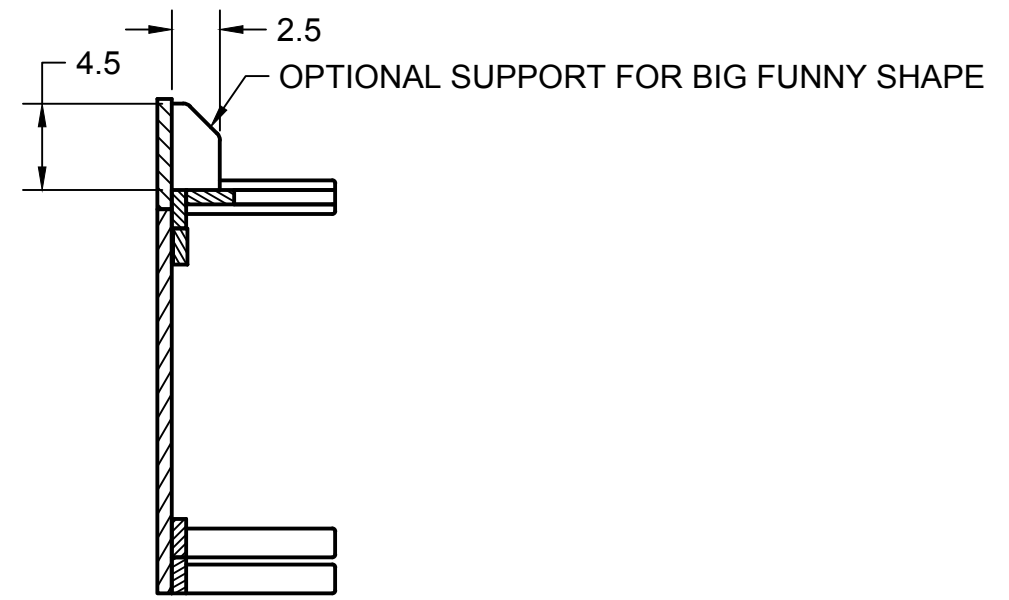
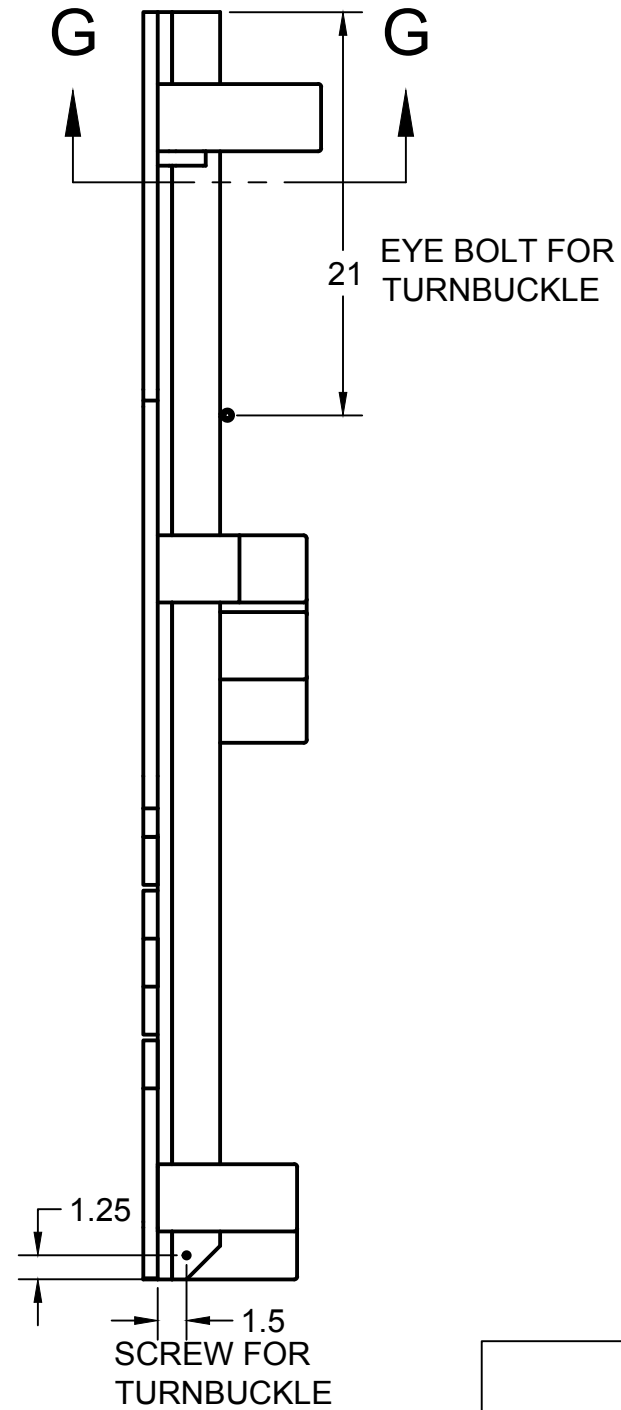
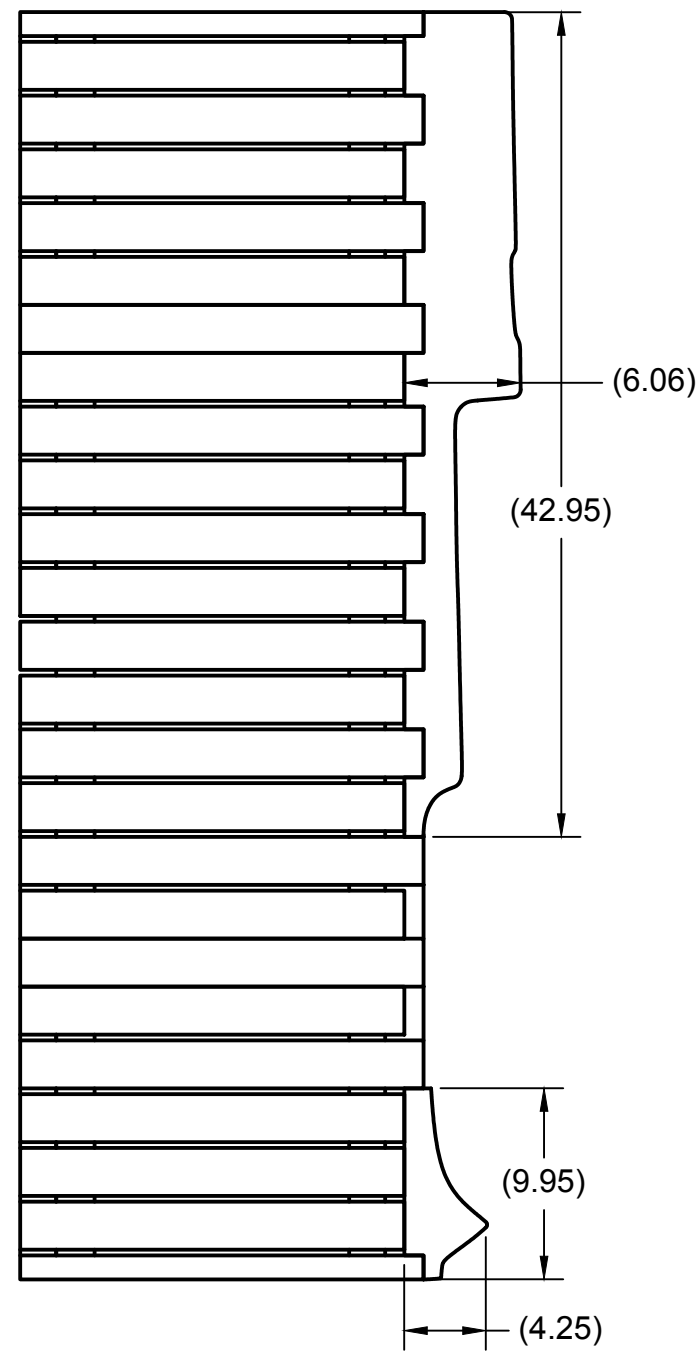


DETAIL E



DETAIL F

APPROVED		PROJECT		
		Amy Makes Stuff		
CHECKED		TITLE		
		Honda Element Bed		
DRAWN	Amy Qian	9/11/19	SCALE 1:10	WEIGHT
		SIZE	CODE	DWG NO
		B		REV
			SHEET 3/5	



SECTION G-G

		PROJECT <b>Amy Makes Stuff</b>			
		TITLE <b>Honda Element Bed</b>			
APPROVED	SIZE	CODE	DWG NO	REV	
CHECKED	B				
DRAWN	Amy Qian	9/11/19	SCALE 1:10	WEIGHT	
			SHEET 4/5		

CUT LIST					
DESCRIPTION	LENGTH [IN]	THICKNESS [IN]	WIDTH [IN]	QUANTITY	LUMBER
SLAT - LONG	21	0.75	2.5	10	1X3 STOCK
SLAT - SHORT	20	0.75	2.5	13	1X3 STOCK
SLAT - END	21	0.75	1.25	2	1X3 RIPPED
TRUSS	66	0.75	2.5	1	1X3 STOCK
RAIL	66	0.75	2.0	2	1X3 RIPPED
RAIL - MOVING	31.45	0.75	1.875	4	1X3 RIPPED
BACK LEG - 2X4	6.5	1.5	3.5	2	2X4 STOCK
BACK LEG - OUTER	7.25	0.5	3.5	1	1/2" PLYWOOD
BACK LEG - MIDDLE	4	0.75	3.5	1	1X4 STOCK
BACK LEG - INNER	6.5	0.5	3.5	1	1/2" PLYWOOD
MID LEG - 2X4	7	1.5	3.5	3	2X4 STOCK
MID LEG - OUTER	3.5	0.5	3.5	1	1/2" PLYWOOD
MID LEG - MIDDLE	4.5	0.75	3.5	1	1X4 STOCK
MID LEG - INNER	7	0.5	3.5	1	1/2" PLYWOOD
FRONT LEG - 2X4	7.75	1.5	3.5	2	2X4 STOCK
FRONT LEG - OUTER	8.5	0.5	3.5	1	1/2" PLYWOOD
FRONT LEG - MIDDLE	5.25	0.75	3.5	1	1X4 STOCK
FRONT LEG - INNER	7.75	0.5	3.5	1	1/2" PLYWOOD

HONDA ELEMENT ONLY					
BIG FUNNY SHAPE	43	0.75	6.5	1	0.75 THICK
LITTLE FUNNY SHAPE	10	0.75	4.5	1	0.75 THICK
BIG SHAPE SUPPORT	4.5	0.75	2.5	1	1X3 STOCK

		PROJECT <b>Amy Makes Stuff</b>			
		TITLE <b>Honda Element Bed</b>			
APPROVED	SIZE	CODE	DWG NO	REV	
CHECKED	B				
DRAWN Amy Qian	9/11/19	SCALE	WEIGHT	SHEET 5/5	